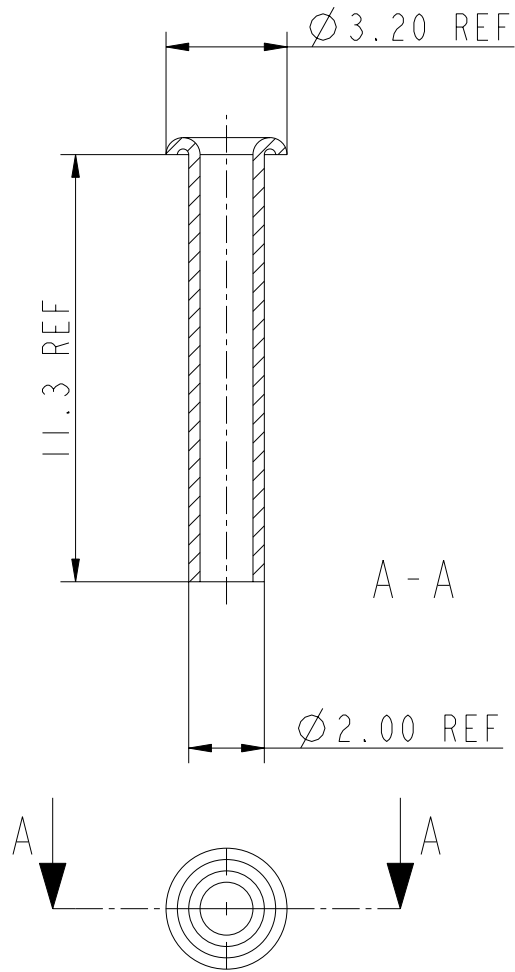


Part Number	Comments
72725-002	STD VERSION
72725-002LF	RoHS COMPATIBLE VERSION



ROHS INFORMATIONS:

- The "LF" product meets European union Directives and other country regulations as described in GS-22-008.
- The product is not intended to be exposed to a manufacturing solder process.
- Packaging spec: see GS-14-920.

Surface coating over all:  
Chemical tinning Sn 0.5 µm.

CONVERSION ACCORDING GS-STANDARDS

rev	ecn no	dr	date
C	B20112	GNV	2002/06/30
D	LS05-0038	JTA	2005/04/26
E	LS05-0086	JTA	2005/09/30
F	LS06-0084	LGO	2006-07-01
-	-	-	-
-	-	-	-
-	-	-	-

Copyright FCI.

www.fciconnect.com

surface - ✓  
ISO 1302

tolerance std  
ISO 406 ISO 1101

projection  
mm

TOLERANCES UNLESS OTHERWISE SPECIFIED

size A4

Scale  
5:1

Dr	Stroeykens	2002/06/30
Eng	G.Nys	2002/06/30
Chr	W.Panis	2002/06/30
Appr	W.Panis	2002/06/30

ANGULAR

LINEAR

0.X

±0.3

0.XX

±0.1

0.XXX

±0.05

ECN

LS06-0084

Product family

SOFIX

Spec ref

-



title TUBULAR RIVET

dwg no

72725C

Rev.

F

catalog no

SEE TABLE

CUSTOMER COPY

sheet 1 of 1

REV F - 2006-04-17